



EV12-110 (12V 110Ah)

MitON
ACCUS EN BATTERIJEN**Specifications**

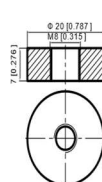
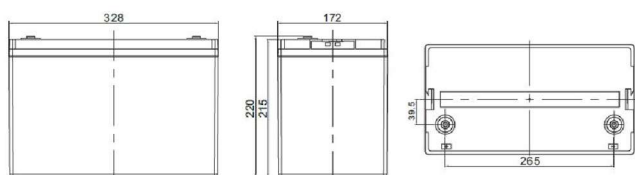
Cells Per Unit	6
Voltage Per Unit	12
Nominal Capacity	110Ah@10hr-rate to 1.80V per cell @25°C
Weight	Approx. 30.5 Kg (Tolerance±3.0%)
Dimensions	Length 328 mm
	Width 172 mm
	Height 215 mm
	Total Height 220 mm
Internal Resistance	Approx. 5.5 mΩ
Terminal	T11
Layout	1
Max. Discharge Current	1100A (5 sec)
Cold Cranking Ampere (CCA)	700A
Max. Charging Current	33.0A
Reference Capacity	C3 85.2AH
	C5 96.0AH
	C10 110.0AH
	C20 116.6AH
Float Charging Voltage	13.6 V~13.8 V @ 25°C Temperature Compensation: -3mV/°C/Cell
Cycle Use Voltage	14.6 V~14.8 V @ 25°C Temperature Compensation: -4mV/°C/Cell
Operating Temp. Range	Discharge: -20°C~60°C
	Charge: 0°C~50°C
Nominal Operating Temp. Range	Storage: -20°C~60°C
	25°C±5°C
Self Discharge	Valve Regulated Lead Acid (VRLA) batteries can be stored for up to 6 months at 25°C and then recharging is recommended. Monthly Self-discharge ratio is less than 3% at 25°C. Please charged batteries before using.
Container Material	A.B.S. UL94-HB, UL94-V0 Optional.

**Description and Features**

VRLA EV Series is specially designed for frequent discharge in deep cycle applications. EV batteries offer reliable performance in high load situations and have a high cycle durability due to the specially designed active material, strong grids and thick plate construction. The addition of carbon ensures faster full recharging of the battery and longer battery life. This stable and durable battery is completely sealed and maintenance free.

Features

- Absorbent Glass Mat technology
- Long service life – 50% more cycles than VRLA AGM
- Faster full recharging – quick use of application
- Suitable for (deep) cycle applications

Layout**Terminal****UL certification****Constant Current Discharge Characteristics: A (25°C)**

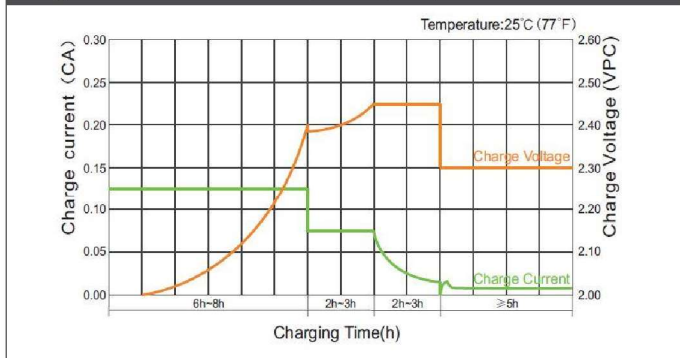
F.V/Time	10 Min	15 Min	30 Min	1 Hr	2 Hr	3 Hr	4 Hr	5 Hr	8 Hr	10 Hr	20 Hr
1.60V	265.3	206.5	122.9	67.9	40.1	31.1	24.4	20.8	14.0	11.6	6.07
1.65V	250.6	197.4	118.0	65.6	38.8	30.1	23.7	20.2	13.8	11.5	5.97
1.70V	230.8	184.9	112.7	63.4	37.5	29.3	23.1	19.7	13.6	11.3	5.90
1.75V	211.2	172.1	107.8	61.1	36.2	28.4	22.5	19.2	13.4	11.1	5.83
1.80V	191.2	158.9	103.0	58.8	34.9	27.5	21.9	18.7	13.2	11.0	5.77
1.85V	156.3	131.8	88.7	52.7	32.0	25.4	20.3	17.5	12.4	10.4	5.48

Constant Power Discharge Characteristics: Wpc (25°C)

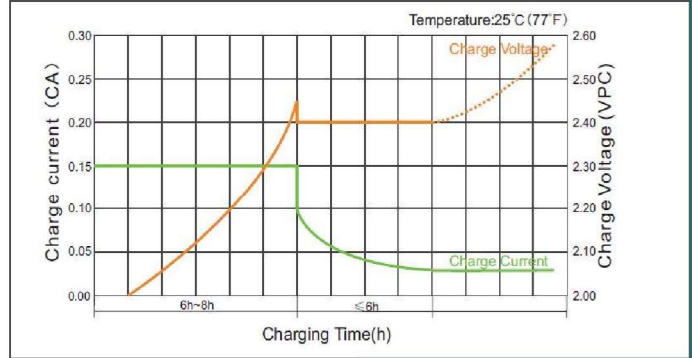
F.V/Time	10 Min	15 Min	30 Min	1 Hr	2 Hr	3 Hr	4 Hr	5 Hr	8 Hr	10 Hr	20 Hr
1.60V	450.9	361.0	223.2	127.6	76.0	59.3	46.9	40.0	27.3	22.8	12.0
1.65V	434.3	350.2	216.5	123.9	73.9	57.7	45.8	39.1	27.0	22.6	11.8
1.70V	407.1	332.9	209.0	120.6	71.9	56.4	44.7	38.3	26.7	22.3	11.7
1.75V	379.4	314.3	201.8	116.9	69.7	55.0	43.7	37.4	26.3	22.0	11.5
1.80V	349.4	294.3	194.9	113.1	67.5	53.5	42.6	36.6	26.0	21.7	11.4
1.85V	290.6	247.7	169.5	102.1	62.2	49.6	39.8	34.2	24.4	20.5	10.9

(Note) The above characteristics data are average values obtained within three charge/discharge cycle not the minimum values. The battery must be fully charged before the capacity test. The C10 should reach 95% after the first cycle and 100% after the third cycle.

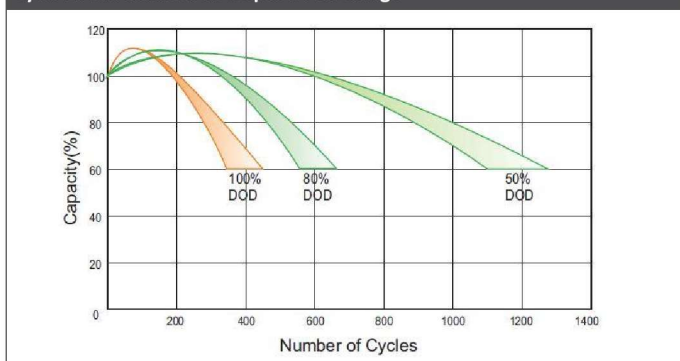
Charge Characteristic Curve For Cycle Use (IIUU)



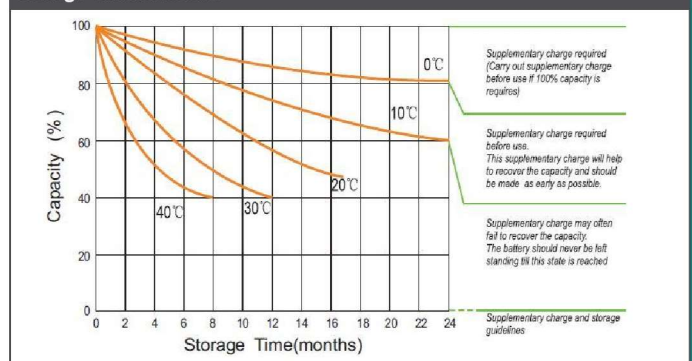
Charge Characteristic Curve For Cycle Use (IUI)



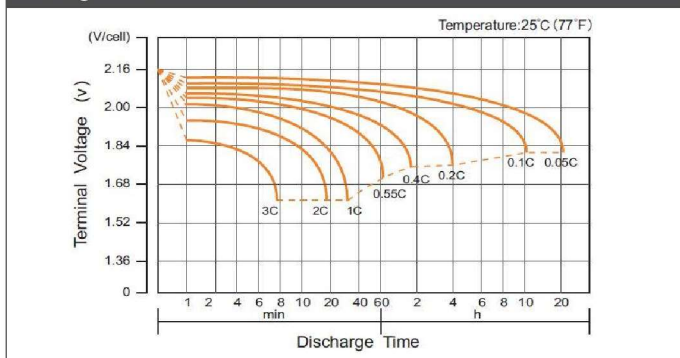
Cycle Life In Relation To Depth Of Discharge



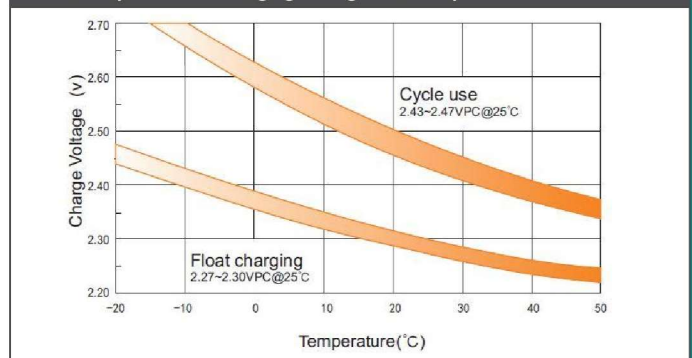
Storage Characteristics



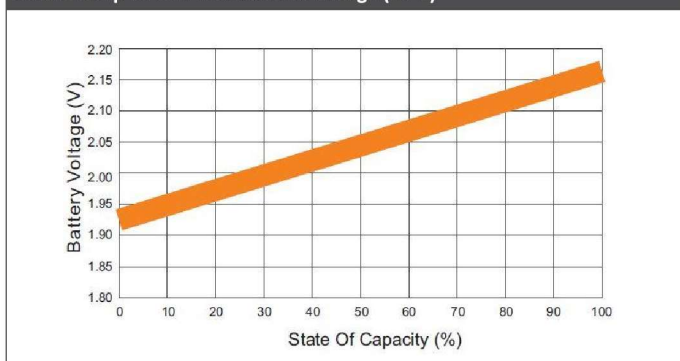
Discharge Characteristics Curve



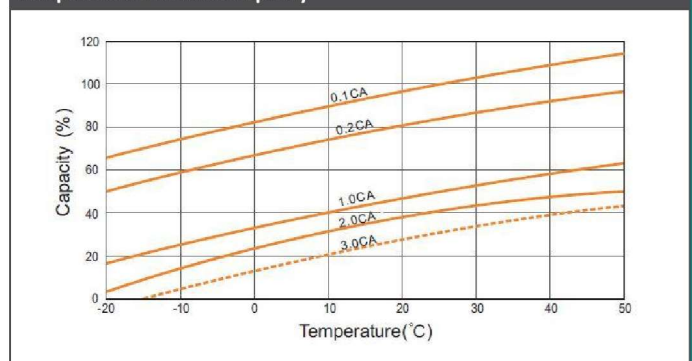
Relationship Between Charging Voltage And Temperature



Relationship Of OCV And State Of Charge (20°C)



Temperature Effects On Capacity



(Note) All above information shall be changed without prior notice, Landport Batteries reserves the right to explain and update the latest information.